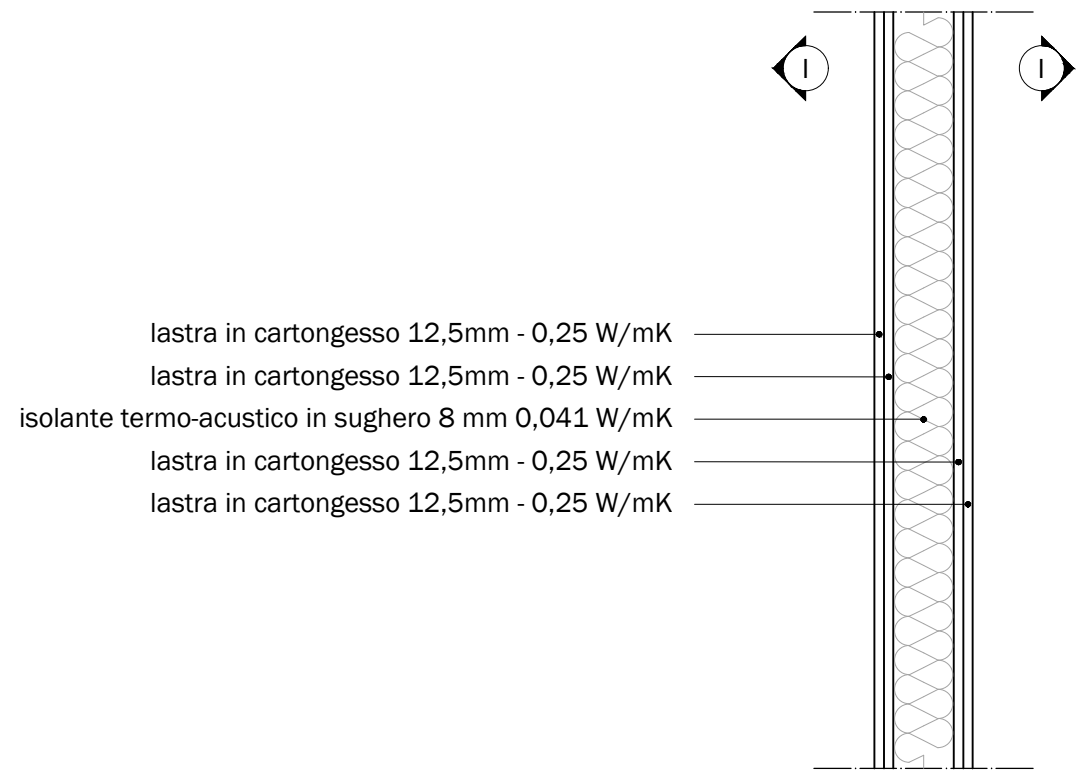
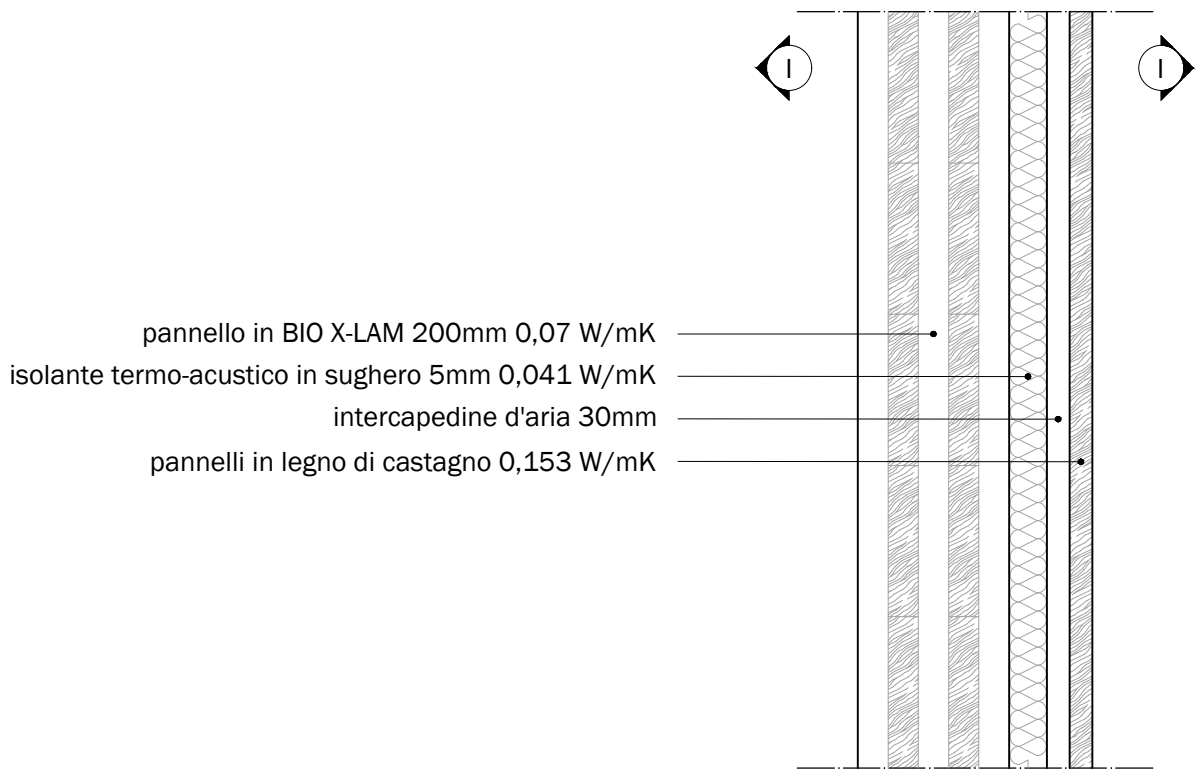


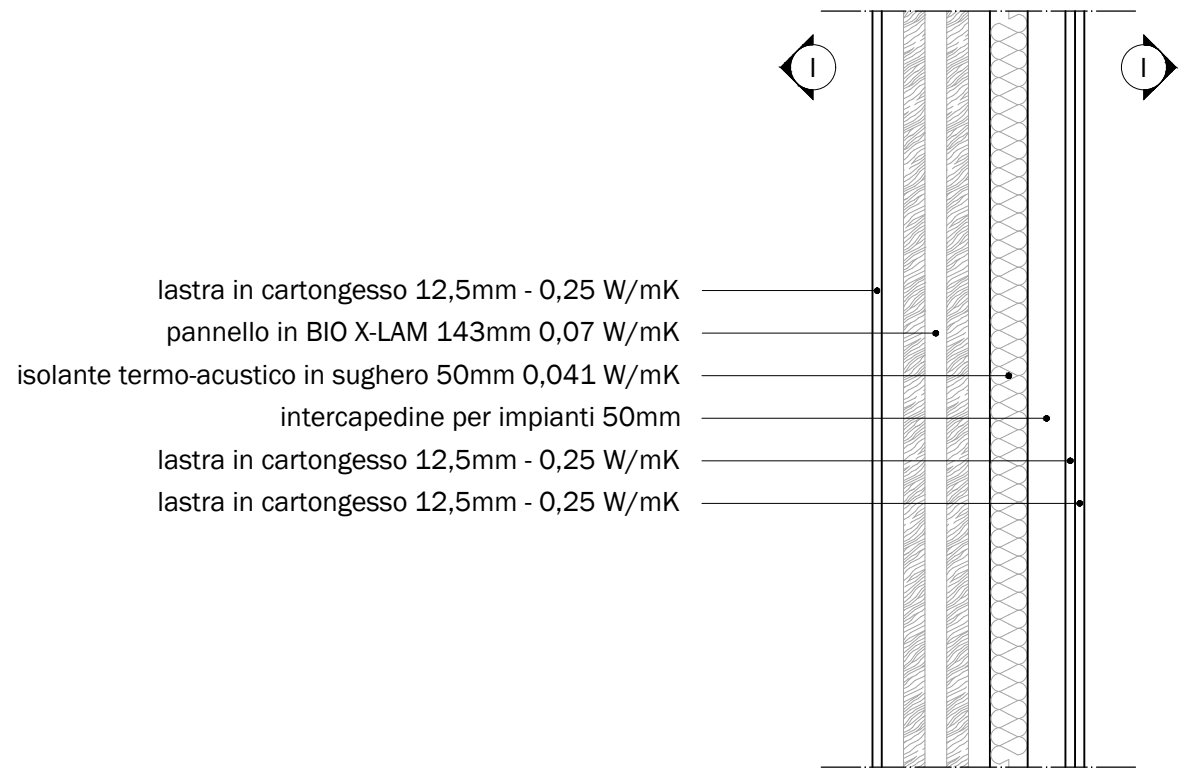
**Partizione verticale interna P1-130mm**  
**U = 0,415 W/m²K**



**Partizione verticale interna P2 - 310mm**  
**U = 0,212 W/m²K**



**Partizione verticale interna P3 - 280mm**  
**U = 0,214 W/m²K**



**Partizione verticale interna P4 - 168mm**  
**U = 0,416 W/m²K**

